

Communiqué



PRESIDENT'S MESSAGE

Andrew Warlen, Mid America Regional Council

October 2019

Dear Colleagues,

What a beautiful day. It is early fall and the forecasted high is 76F. I hope everyone has a chance to take advantage of the weather and participate in their favorite outdoor activity. Fall also gives me an excuse (like I need one) to share another fall joke with you. What do you get when you divide the circumference of your jack-o-lantern by its diameter? The answer: "pumpkin pi".

Today is also a great day because it was the second day of our Joint Public Health Conference. It has been a great conference with excellent sessions. This was our second year at the Holiday Inn Executive Center in Columbia, MO and the new venue continues to provide us with more elbow room. However, the extra room was not evident in a couple of the breakout sessions that I attended which were standing room only. My take-away from that was that the conference committee did an excellent job of selecting topics that were timely and of lots of interest to our public health colleagues. This year we had a record-breaking 245 attendees. This is up 25 from the 220 attendees in 2018. Our previous attendee record was 234 in 2014. This year we also had 2 sponsors and 22 exhibitors.

I want to thank Conference Planning Committee consisting of representatives from the Missouri Public Health Association, the Missouri Association of Local Public Health Agencies, the Missouri Institute for Community Health, the Missouri Center for Public Health Excellence and the Missouri Department of Health and Senior Services. Many individuals contribute their time and effort every year to make this an outstanding conference year. This year we had another special General Session to close out the conference. Kim Becking, an engaging, high-energy, fun and impactful motivational keynote speaker, presented practical tools and strategies to effectively manage change and deal with difficult people, tough conversations, and hard issues. As always, one of my favorite parts of the conference was the opportunity to connect with my public health friends and colleagues.

In other news, I am happy to announce that phase II of the #HealthierMO work is well underway. The initial draft of a Foundational Public Health Services (FPHS) Model for Missouri has been completed and is being shared with public health stakeholders for feedback. We are on track to finalize the model by the end of the year and begin the capacity assessment in 2020. For more information on the #HealthierMO initiative visit www.healthiermo.org and check out the revamped website.

I hope you enjoy the newsletter. As always, please give us your comments and suggestions and we always welcome submissions. We are all interested in the public health advances you are making in your community.



Andrew Warlen
President, Missouri Public Health Association



Calendar of Events

November 2019
APHA Annual Meeting

January 16, 2020
Board Meeting
Jefferson City, MO

April 2, 2020
Board Meeting
Jefferson City, MO

July 16, 2020
Board Meeting
Jefferson City, MO

September 22-24, 2020
Joint Annual Conference
*Holiday Inn Executive Center
Columbia, MO*

November 2020
APHA Annual Meeting

November 2020
Education Workshop

All Board Meetings begin at 10
am unless otherwise noted.

Mark Your Calendars

Joint Annual Conference

September 22-24, 2020
Holiday Inn Executive Center
Columbia, MO



MoALPHA
MISSOURI ASSOCIATION OF LOCAL PUBLIC HEALTH AGENCIES

MICH
Missouri Institute for Community Health
Partners for Better Health



Join MPHA

Are you a member of APHA but not currently a member of MPHA? We need your membership to further the message of public health in Missouri.

The benefits of being a member of MPHA include:

- Three newsletters a year filled with up-to-date information
- Legislative updates on Missouri issues as well as national topics impacting Missourians
- Annual meeting with other public health professionals
- Statewide network of public health professionals

If you are interested in membership in MPHA, please contact Dan Luebbert, Platte County Health Department, 816-858-2412, Dan.luebbert@plattehealth.com or complete the membership form on the back page and return it to the MPHA office.

NEW MPHA MEMBERS

Robin Worthington, Northeast Missouri Area Health Education Center

Laura Wallace, Northeast Missouri Area Health Education Center

Heather Rhodes, MODHSS

Sharon Helton, MODHSS

Sarah Valenza

Philomina Gwanfogbe, MODHSS

Kayla Riel, University of Missouri-MPH Program

Meghan Meyers, Arthur Center Community Health

Fei Wu, MODHSS-Bureau of Reportable Disease Informatics

Julie Borders, MODHSS-Bureau of Reportable Disease Informatics

Becca Mickels, MODHSS-Bureau of Reportable Disease Informatics

Nicole Massey, MODHSS

Traci Hadley, MODHSS

Cheryl West, MODHSS

Jaime Young, MODHSS

Kate Cleavinger, MODHSS

Drew Pratt, MODHSS

Gordon Watkins, MODHSS

Ashley Wiggington, MODHSS

Joseline Hernandez-Arroyo, MODHSS

Leslie Kavlak, MODHSS

Alex Berkley, MODHSS

Barbara Brendel, MODHSS

Reena Dixit, Truman State University

Jessica Chen, Truman State University

Katrina Utz, St. Louis County Department of Public Health

Kathryn Metzger, MODHSS-Office of Rural Health

Nicholas Reece, University of Missouri

APHA Affiliate E-news

Last chance: Get your tickets for the CoA Awards Reception

When you're registering for APHA's 2019 Annual Meeting and Expo, don't forget to add on a ticket to the Council of Affiliates Awards Reception! This is the first year the event is ticketed. Reserve your space now! Select the CoA Awards Reception under ticketed events when you register for APHA 2019. Already registered? You can log back in to your account and add it on. Or, make a donation and sponsor the event! Learn more [here](#).

Update your Affiliate leader info

If you've had some new leaders begin at your Affiliate, please update us here at APHA Affiliate Affairs. Please send the first and last name, new or changed roles, and preferred email address of any officers and board members to Affiliateaffairs@apha.org.

Share your activities with The Nation's Health

APHA's newspaper, The Nation's Health, features news on APHA's state and regional affiliated public health associations. Is there a public health issue your association is rallying around? A new committee, strategic plan or program? Are you partnering with other groups to meet your goals? Contact Aaron Warnick, The Nation's Health reporter, at aaron.warnick@apha.org or 202-777-2529, and let him know. Information is welcome anytime.

Technical assistance opportunity around climate change for Affiliates

The American Council for an Energy-Efficient Economy's Health and Environment program conducts research and outreach on the linkages between energy efficiency and health, both as they relate to indoor air quality for building occupants and the public health impacts of reducing pollution and mitigating climate change. ACEEE has resources to provide technical support to health partners in 2019. This support can include providing analyses on the health impacts of energy efficiency policies or helping to create resources for advocacy efforts. As part of this work, ACEEE is reaching out to partners working in states to get a better understanding of their current and future projects, and whether we can provide any technical support.

Affiliates interested in discussing this opportunity further can contact Cassandra Kubes, Research Manager, Health and Environment, at ckubes@aceee.org. Find more information about ACEEE's Health and Environment program at <https://aceee.org/topics/health-environment>.

Recommendations for State Suicide Prevention Infrastructure Oct. 23, 2019 1:30-2:30 p.m. ET

Presenter: Kerri Nickerson, LCSW, MPH, Director of Grantee and State Initiatives, Suicide Prevention Resource Center, Education Development Center, Inc. Suicide rates have increased in nearly all states over the past 15

years. The Suicide Prevention Resource Center, in conjunction with APHA and other national advisors, recently created the first-ever state suicide prevention infrastructure guidance. These recommendations will help state policy leaders assess the status of their current infrastructure and guide policymaking, funding and administrative decisions. This webinar will highlight key recommendations that APHA Affiliates and members can use to promote change in their states.

Apply today for a Student Champions for Climate Justice award

Are you a student looking to spark action on climate change and health equity? APHA's Center for Climate, Health and Equity is offering a new opportunity — the Student Champions for Climate Justice Award. The Center will provide support for up to five college or university undergraduate and graduate students or student groups to create a campus experience during APHA's National Public Health Week (April 6-12, 2020). Experiences will highlight the connection between climate change, health and equity for fellow students, faculty and staff and can take many forms. Read more about the Student Champions for Climate Justice Award, and apply today. Application deadline is Nov. 17.

New APHA Health Equity fact sheet

"Creating the Healthiest Nation:

(Continued on page 5)

APHA Affiliate E-news

Water and Health Equity” is the latest release in APHA’s series of fact sheets on health equity. Previously released fact sheets explore advancing health equity, promoting environmental justice and assuring health and educational equity. All the fact sheets in the series will describe why health equity is central to creating the healthiest nation and highlight ways public health practitioners and partners can advance equity.

APHA Partners with Communities for Healthier School Climates

We are working to bring attention to the groups of students at highest risk of not graduating high school. Rates of non-completion are an estimated 6.2 times higher among students from the lowest income-earning families, and black and Hispanic students continue to graduate at rates far behind their white and more affluent peers.

APHA’s Center for School, Health and Education recognizes that classroom instruction has limited effectiveness if students’ basic needs are not met.

Read our impact report to learn about our journey to prevent dropout and reduce social inequities that derail health and educational success for students across the country.

New partner resources from the APHA Policy Center

Health Equity, School Discipline Reform, and Restorative Justice identifies key linkages between

exclusionary school discipline practices and health inequities for students of color and students with disabilities. Using an evidence-based framework, the authors explore how one school-based intervention — restorative justice — can support healthier school climates and promote developmental relationships that are crucial to ensuring that all children can reach their full academic and health potential.

Health and Hunger through the Lens of Race, Ethnicity and Culture, an issue brief by AASA, the School Superintendents Association, explores the impact of race, ethnicity and culture on health and hunger through reflections from parents, students, school system leaders and other administrators.

Support APHA

Support APHA by making a contribution online or calling the APHA Development Office at 202-777-2486. Also, you can make a difference while you shop Amazon. Simply shop at <http://smile.amazon.com/ch/13-1628688>, and AmazonSmile donates to APHA.

Public Health CareerMart at the APHA Annual Meeting and Expo Employers, do you need to recruit? Are you in search of public health professionals? Job seekers, do you need a career coach? Are you in need of career advice or need your resume critiqued? Join us at the APHA Annual Meeting and Expo! Visit Public Health CareerMart.

Call to action to promote the All of Us Research Program to people with disabilities

WHY SHOULD YOU PARTICIPATE IN THE ALL OF US RESEARCH PROGRAM?

The All of Us Research Program is **YOUR** chance to make an impact and get involved in direct, cutting-edge research to find solutions that could help people with disabilities. For the first time, people with disabilities are being encouraged to participate and are being asked to enroll in a study that can directly impact how health care is received in the future. If we truly believe in the concept of “nothing about us without us,” then **we must answer the call** when asked to participate.

What is this Call to Action? The American Association on Health and Disability is calling on YOU to learn more about and consider involvement in the National Institutes of Health’s All of Us Research Program. If you are interested in participating in the research program, enroll at <https://www.JoinAllofUs.org/together>.

Prepare for the CPH Exam

The “Certified in Public Health Exam Review Guide” will help prepare you for the Certified in Public Health exam administered by the National Board of Public Health Examiners. Addressing the most up-to-date public health tasks, this timely APHA Press book will help pave the way for your professional achievement in the field. APHA members get a

(Continued on page 6)

APHA Affiliate E-news

discount on the CPH exam, too.

Join Us and Speak for Health

APHA's Speak for Health campaign empowers our members and the public health community to talk about why public health matters and call on elected officials to support our important work. We make it easy to talk about public health advocacy priorities on social media and to share with your representatives. Check out our Speak for Health page, and make your voice heard.

We want to see you in Philly!

APHA's 2019 Annual Meeting and Expo in Philadelphia is only a few weeks away! If you haven't registered, you still have time! Register now to expedite your check-in process when you arrive in Philly. Don't miss the biggest public health event of the year! Here's a glimpse of what's in store at the meeting.

Can't make it to the meeting?

We'll bring the meeting to you!

Purchase APHA Live for access to 14 premier sessions and to earn up to 19 Continuing Education credits. Nearly 60 public health leaders and advocates will be speaking at these special sessions, including:

- Catherine Alicia Georges, AARP
- Leana Wen, George Washington University
- David Williams, Harvard University
- Jerome Adams, US Surgeon General

Many of this year's premier sessions focus on the meeting's theme "Creating the Healthiest Nation: For science. For action. For health." APHA Live is an affordable alternative if you can't travel to Philadelphia and a great supplement for attendees wanting to earn more CE credits and maximize on the meeting's sessions. We offer exclusive savings for members on individual and group subscriptions. Check out the full schedule.

Already registered?

Badges for all pre-registered attendees have been mailed. Please contact registration if you are missing any preregistered materials or have questions. Duplicates will be printed for you at any on-site registration counter in the PCC, Grand Hall. Badges for international attendees and exhibitors are not mailed and will be available for pick up on site.

Download the APHA 2019 Mobile App

Our meeting app is the ultimate, all-in-one tool!

- Build and managing your schedule.
- Receive reminders and updates.
- Engage and network with peers.
- Take notes on all sessions and events and star items you don't want to forget about.
- Navigate the convention center with handy maps.
- Filter sessions pertinent to your interests
- And more!

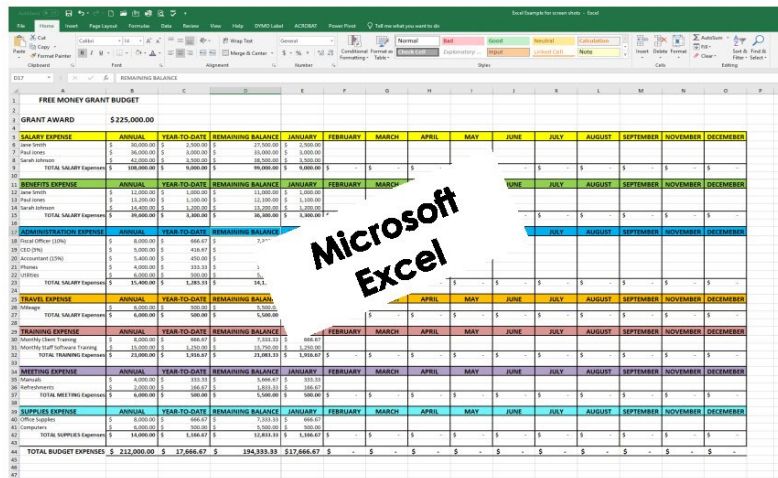
There is so much to do and see at APHA 2019! Check out 10 ways to get the most out of the Annual Meeting for tips, recommendations and suggested events to attend.

Highlights

- Come early to the Opening General Session to find your seat.
- Don't miss our Monday General Session moderated by Karen DeSalvo. The panel will discuss prevention as the centerpiece of public health.
- Add the Closing General Session, "1619 – 2019: Health and Justice Denied" to your schedule.
- Don't miss the Grand Opening of the Exhibit Hall. Meet exhibitors, participate in the APHA Play social media contest, visit Everything APHA, get free headshots taken and have some fun.
- Start practicing your dance moves! Join us on the dancefloor on Sunday, Nov. 3 at 5:30 p.m. for the APHA Dance Party.

RSVP for the APHA 2019 Sunset Tweetup. This free event will be filled with public health leaders, VIP tweeters, bloggers and your peers. Come eat, drink and talk about essential partnerships and improving public health.

NON-PROFITS WORKING SMARTER



The screenshot shows a Microsoft Excel spreadsheet titled 'FREE MONEY GRANT BUDGET'. It contains a detailed budget table with columns for months (January to December) and rows for various expense categories. A 'Microsoft Excel' watermark is visible over the spreadsheet.

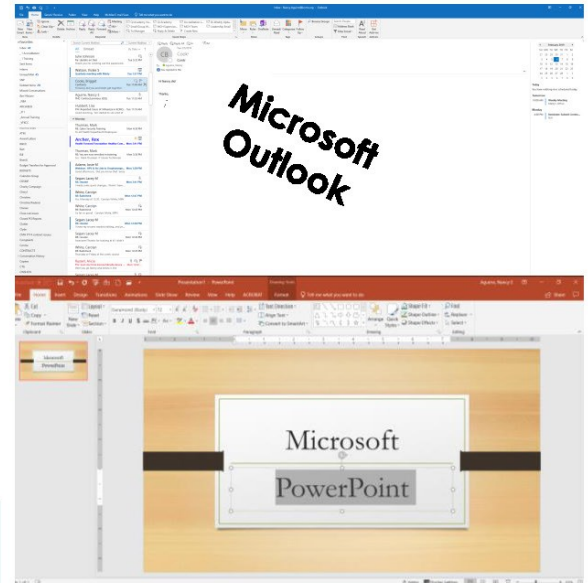
EXPENSE	ANNUAL	YEAR-TO-DATE	REMAINING BALANCE	JANUARY	FEBRUARY	MARCH	APRIL	MAY	JUNE	JULY	AUGUST	SEPTEMBER	OCTOBER	NOVEMBER	DECEMBER
GRANT AWARD															
SALARY EXPENSE															
Salary Expense	\$225,000.00	\$225,000.00	\$225,000.00	\$18,750.00	\$18,750.00	\$18,750.00	\$18,750.00	\$18,750.00	\$18,750.00	\$18,750.00	\$18,750.00	\$18,750.00	\$18,750.00	\$18,750.00	\$18,750.00
RENTAL EXPENSE															
Rental Expense	\$10,000.00	\$10,000.00	\$10,000.00	\$833.33	\$833.33	\$833.33	\$833.33	\$833.33	\$833.33	\$833.33	\$833.33	\$833.33	\$833.33	\$833.33	\$833.33
TRAVEL EXPENSE															
Travel Expense	\$5,000.00	\$5,000.00	\$5,000.00	\$416.67	\$416.67	\$416.67	\$416.67	\$416.67	\$416.67	\$416.67	\$416.67	\$416.67	\$416.67	\$416.67	\$416.67
MEETING EXPENSE															
Meeting Expense	\$2,000.00	\$2,000.00	\$2,000.00	\$166.67	\$166.67	\$166.67	\$166.67	\$166.67	\$166.67	\$166.67	\$166.67	\$166.67	\$166.67	\$166.67	\$166.67
SUPPLIES EXPENSE															
Supplies Expense	\$1,000.00	\$1,000.00	\$1,000.00	\$83.33	\$83.33	\$83.33	\$83.33	\$83.33	\$83.33	\$83.33	\$83.33	\$83.33	\$83.33	\$83.33	\$83.33
TOTAL BUDGET EXPENSES	\$242,000.00	\$242,000.00	\$242,000.00	\$19,916.67	\$19,916.67	\$19,916.67	\$19,916.67	\$19,916.67	\$19,916.67	\$19,916.67	\$19,916.67	\$19,916.67	\$19,916.67	\$19,916.67	\$19,916.67

How to get the most out of Microsoft Office Products for Non-Profits

Non-profit organizations are forced to do more with less; less money and fewer staff. The best option to meet increasing demands is getting the most out of the available technology; but how?

- Make the spreadsheet do the work for you.
- Let Outlook sort your emails and alert you to important emails.
- Design presentations with impact.

LET'S GET TRAINING



What Classes?

- Microsoft Excel I (fundamentals)
- Microsoft Excel II (formulas & charts)
- Microsoft Outlook
- Microsoft PowerPoint

Nancy E. Aguirre
816-729-4909
nancyaguirre1977@icloud.com

Sending staff to training can be very expensive, so bring the trainer to you instead. Nancy Aguirre has almost 20 years' experience working in local government with Microsoft Office products in Accounting, Grants Management, and as a Health Department Analyst. Nancy will travel to your offices to offer two (2) three-hour training classes each day. Nancy has successfully facilitated multiple sessions of all four classes offered. Participants have included many local health department representatives and can provide references upon request.

- The training can be the same class offered twice in the same day or two different classes (i.e. Excel and Outlook). The schedule to be chosen by your organization.
- Cost is based on a minimum of 10 participants per class (maximum 15) at \$25 per participant per class, plus travel expenses (mileage and hotel if applicable).
- One-on-one training available for an additional \$25 per hour while on-site.
- Training participants can be your organization staff alone, include community partners, subcontractor staff, volunteers, etc.

Creating a Healthier MISSOURI

For Science. For Action. For Health.

Joint Annual Conference

Thank you to our Sponsors and Exhibitors

#HealthierMO

Big Tree Medical Home

Canedy Sign

Champ Software

Court Money

Missouri Family Health Council

Missouri Kidney Program

Missouri State University-Master of Public Health Program

Missouri Telehealth Network & Show-Me Echo

MODHSS

MODHSS-Bureau of Environmental Epidemiology

MODHSS-Bureau of Genetics & Healthy Childhood

MODHSS-Bureau of HIV, STD & Hepatitis

MODHSS-Bureau of Reportable Disease Informatics

MODHSS-Missouri Violent Death Reporting System

MOPHIMS-Bureau of HealthCare Analysis and Data Dissemination

National Association of County and City Health Officials

National Board of Public Health Examiners (NBPHE)

Patagonia Health, Inc.

PRAMS-Pregnancy Risk Assessment Monitoring System

Safer Homes Collaborative

Starpoint Global Services

University of Missouri Department of Public
Health

US Healthcare Recruiting



Creating a Healthier MISSOURI

For Science. For Action. For Health.

Joint Annual Conference

Thank you to our Sponsors and Exhibitors



Creating a Healthier MISSOURI

For Science. For Action. For Health.

Joint Annual Conference

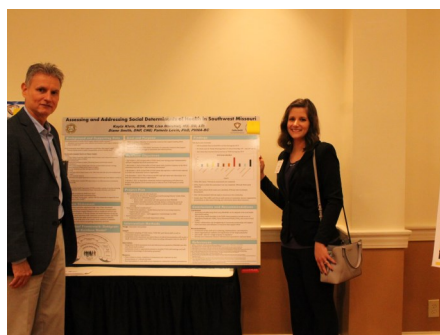
Award Winners



2019 Group Merit Award (left) Kansas City Health Department Environmental Health for Outstanding Contribution to Public Health in Missouri

2019 MPHA Publication Award (right) Rex Archer, MD, MPH, City of Kansas City Health Department for Outstanding Contribution to Public Health in Missouri

Poster Award Winners

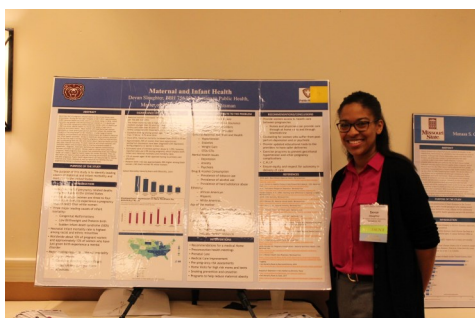
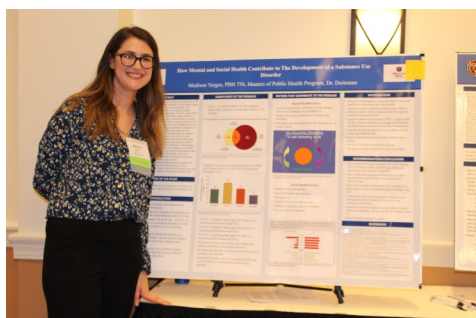
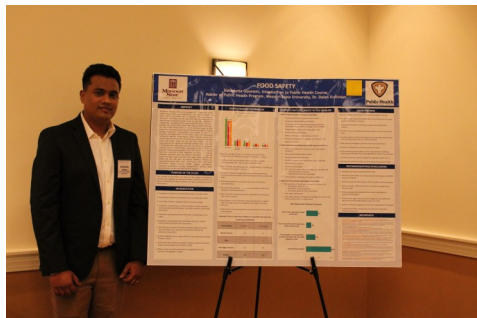


First Place (left) Katherine Dettenwanger, “In a Rural Community in Ecuador, Does Water Access Impact Health Outcomes”; **Second Place** (middle) Kayla Klein, “Assessing and Addressing Social Determinants of Health in Southwest Missouri”; **Third Place** (right) Stacy Goddard, “A Pilot Test of Adolescent and Parent Electronic Vapor Products Knowledge and Perception in Rural Southwest Missouri”; **Honorable Mention** (not pictured) “Geographic and Temporal Trends in Immunization Exemption Rates”

Creating a Healthier MISSOURI

For Science. For Action. For Health.

Joint Annual Conference



#GearUpMO Campaign

Are you ready to do your part to assure a healthier Missouri for everyone? The grassroots #HealthierMO initiative encourages you to “gear up” for Missouri.

Missouri’s public health system needs a full overhaul – transformation – and public health professionals have the greatest capacity to lead the change. Like a complex machine with many moving parts, the public health system must operate at peak performance in order to ensure every Missourian has the fair opportunity to choose a healthier life. All gears must operate together, smoothly and efficiently. When internal or external forces cause the system to slow, lock up or break down, Missourians suffer.

You play an important role in ensuring the smooth operation of Missouri’s public health system. Uniquely positioned on the front-lines, you understand the challenges families in your communities face. Your “gear” must be performing well for the entire system to work effectively to improve Missourians’ well-being. Your creative ideas can drive innovative solutions. Your relationships can bloom into strategic partnerships that energize the public health system.

It’s time to **gear up** for Missouri! Take your passion for Missouri families and for public health and get involved!

- **Step up** to utilize your unique skills and ensure your gear operates smoothly.
- **Think upstream** about more effective ways to address issues at their root.
- **Partner up** using your enthusiasm and leadership skills to increase capacity and build energy in the public health system.
- **Speak up** for public health through avenues like your social media network and community conversations.

With all the gears in the public health system working together, our combined energy can be applied to the highest leverage points to make significant improvements to public health in Missouri. We can address the issues that affect health and achieve amazing outcomes – safer neighborhoods, a stronger economy and thriving communities where every Missourian has the fair opportunity to choose a healthier life.

How do you gear up for public health? Share your story using #GearUpMO. You can learn more about the #HealthierMO initiative and the #GearUpMO campaign on our social channels and at www.HealthierMO.org.

Gear up for public health. Together we can use passion, policy and partnerships to build a healthier Missouri!



Northwest Chapter Report

Erin Sanders, Platte County Health Department

The Northwest Chapter of the Missouri Public Health Association met on July 9th, 2019. Lyndall Fraker, Director of the Section for Medical Marijuana Regulation with the Missouri Department of Health and Senior Services, spoke on the progress of implementing medical marijuana in Missouri. The group discussed the role local public health will have in this process and potential challenges and concerns.

The next meeting of the Northwest Chapter is scheduled at **11:30 AM on Tuesday, October 8, 2019 at Mid-America Regional Council in Kansas City (Heartland Room)**. Anne Biswell from the Mother and Child Health Coalition will be speaking about Safe Havens for Newborns. All interested parties are encouraged to attend.

CURRENT OFFICERS OF THE NORTHWEST CHAPTER

President, Marty Galutia, Kansas City Health Dept., 2400 Troost Avenue, Kansas City, MO 64108, marty.galutia@kcmo.org

Vice President, Amanda Prough, Cass County Health Dept., 300 South Main Street, Harrisonville, MO 64701, amandapr@casscounty.com

Past President, Bridgette Shaffer, Jackson County Health Dept., 313 South Liberty, Independence, MO 64050, bridgette.shaffer@tmcmed.org

Secretary, Erin Sanders, Platte County Health Dept., 212 Marshall Road, Platte City, MO 64079, erin.sanders@plattehealth.com

Treasurer, MaryAnna Henggeler, Jackson County Health Dept., 313 South Liberty, Independence, MO 64050, mary.henggeler@tmcmed.org

Tobacco Free Missouri

Jenna Wintemberg

Monett Goes Smokefree – The Monett City Council adopted a smokefree and vape-free city ordinance covering workplaces and other public spaces. The new rules will go into effect on November 19, 2019.

DHSS Announces First Vaping-Associated Death in Missouri - A Missouri man in his mid-40s died this September at Mercy Hospital St. Louis due to an illness associated with the use of e-cigarettes, according to the Missouri Department of Health and Senior Services. This was the first vaping-related death in Missouri.

Currently, There are 805 lung injury cases reported from 46 states and 1 U.S. territory, and 12 deaths have been confirmed in 10 states. The latest findings from the investigation into lung injuries associated with e-cigarette use, or vaping, suggest products containing THC play a role in the outbreak. According to the Centers for Disease Control and Prevention (CDC):

- About 77% of patients reported using THC-containing products; 36% reported exclusive use of THC-containing products.
- About 57% of patients reported using nicotine-containing products; 16% reported exclusive use of nicotine-containing products.

While this investigation is ongoing, the CDC recommends that refraining from using e-cigarette or vaping products, particularly those containing THC.

Tobacco Free Missouri & Partners Develop E-Cigarette Toolkit – TFM is releasing an e-cigarette prevention toolkit for schools. Email info@tobaccofreemissouri.org for more information.

Call for Articles

As a member of the Missouri Public Health Association, you are invited to submit articles for our newsletter. We welcome submissions on any public health related topic.

Please include the following information with your article submission:

- Name
- Professional Affiliation or Academic Institution (if a student)
- Title of Article
- Reference List
- A Headshot or Photo of You Doing Public Health Work

Please keep your article within 300-500 words. Articles from members will be reviewed by the Missouri Public Health Association Board and the Newsletter Editor. Please email your articles and any questions to Lisa Marshall at lisa.marshall@lpha.mo.gov or Sandy Boeckman at sboeckman@mopha.org.

2020 NEWSLETTER SCHEDULE

FEBRUARY NEWSLETTER ~ Article submissions are due by February 1, 2020

JUNE NEWSLETTER ~ Article submissions are due by June 1, 2020

OCTOBER NEWSLETTER ~ Article submissions are due by October 1, 2020

MPHA Members,

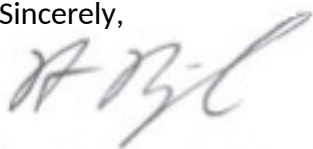
Now in existence since 1925, the Missouri Public Health Association (MPHA) continues to strive to expand our services to meet the needs of public health across Missouri. We hope that you took part in one or more of the many events that we offered this past year.

It is our mission to be the voice of public health in Missouri through advocacy, membership services and our Education Foundation. In order to meet our mission and provide services in our state, MPHA relies on the generosity of individuals and organizations for support. Without the investment of members like you, MPHA wouldn't be able to continue to be the voice for public health across Missouri.

We are asking you to help us continue the public health message by a donation to MPHA Education Foundation. Every dollar counts in the advancement of public health. If each member would make a donation, imagine the progress and impact we could make in Missouri. Your generosity will make a difference in the future of MPHA by allowing us to continue in our work advancing public health in Missouri. **The MPHA Education Foundation is a 501(c)3 corporation which means that donations to the Foundation are tax deductible.**

Thank you in advance for your generosity.

Sincerely,



Robert Niezgoda, MPH, MPHA Foundation Chair

Donating is easier now more than ever. Visit www.mopha.org and click on the Scholarship/Awards tab. Your generous donations will help support educational opportunities for public health professionals and students and promote quality public health for Missouri.



MPHA Board of Directors

OFFICERS

President (2019-2020)

Andrew Warlen, MPH
Mid America Regional Council
600 Broadway, Ste. 200
Kansas City, MO 64105
816-701-8293
awarlen@marc.org

President-Elect (2019-2020)

Kristi Campbell
Cole County Health Dept.
3400 W. Truman Blvd.
Jefferson City, MO 65109
573-636-2181 ~ Fax: 573-636-3851
kcampbell@colecouny.org

Vice President (2019-2021)

Lynelle Phillips, RN, MPA
University of Missouri
801 Lewis Hall
Columbia, MO 65211
(573) 884-8976
phillipsln@missouri.edu

Secretary (2018-2020)

Dan Luebbert
Platte County Health Department
212 Marshall Road
Platte City, MO 64079
(816) 858-2412
dan.luebbert@plattehealth.com

Treasurer (2019-2021)

Dr. Dalen Duitsman
Missouri State University
Professor-MPH Program and
Director-Ozarks Public Health
Institute
901 S. National Avenue
Springfield, MO 65897
417-836-5550 ~ Fax: 417-836-3171
DalenDuitsman@missouristate.edu

Imm. Past President (2019-2020)

Robert Niezgoda, MPH
PhD Student
417-425-3119
rpnezgod@gmail.com

Affiliate Rep. to the APHA

Governing Council (2017-2019)

Denise Strehlow, RD, LD, MPH,
MSW
BJC School Outreach & Youth
Development
4950 Children's Place, Suite 6401
Mail Stop: 90-29-927
St. Louis, MO 63110
314-286-0504 (office)
314-580-8713-cell
dsl9171@bjc.org

NOTE: *The Executive Committee is made up of the President, President-Elect, Immediate Past President, Vice President, Secretary, Treasurer and the ARGC Rep.*

BOARD MEMBERS AT LARGE

Nicholas A. Collins (2018-2020)
United HealthCare
721 Lami Street
St. Louis, MO 63104
314-313-5652
Nicholas_Collins@uhc.com

Tracie McClendon-Cole
(2018-2020)
Kansas City Missouri Health Dept.
2400 Troost Ave., Ste. 4400
Kansas City, MO 64108
(816) 513-6240
tracie.mcclendon@kcmo.org

Mary Menges (2019-2021)

MoDHSS
101 N. Chestnut Street
Jefferson City, MO 65101
573-751-3334 ~ Fax: 573-526-2754
Mary.Menges@health.mo.gov

Bert Malone (2019-2021)

627 W. 131st Terrace
Kansas City, MO 64145
Bert.malone923@gmail.com

STUDENT LIAISON

Kaylea Nemechek
University of Missouri-Columbia
Master of Veterinary Public Health
knnfgd@mail.missouri.edu

NOMINATING COMMITTEE

Bert Malone, Member
Dalen Duitsman, Chair
Tracie McClendon-Cole, Member

EXECUTIVE DIRECTOR

Sandra C. Boeckman
722 E. Capitol Avenue
Jefferson City, MO 65102
573-634-7977 ~ Fax: 573-635-7823
sboeckman@mopha.org

MPHA FOUNDATION

Robert Niezgoda, MPH
417-425-3119
rpnezgod@gmail.com

NEWSLETTER

Lisa Marshall
Taney County Health Dept.
PO Box 369, 15479 US Hwy 160
Branson, MO 65653
417-546-4725
lisa.marshall@lpha.mo.gov



722 E. Capitol Avenue
Jefferson City, MO 65101

Visit us on the Web
www.mopha.org

COMMUNIQUE' Editor

Lisa Marshall, MS, RD, LD

Send comments and/or articles to:

Lisa.marshall@lpha.mo.gov

MPHA MEMBERSHIP

YES

I want to help fulfill MPHA's mission to promote health in the State of Missouri

☐ Regular Membership \$60.00

☐ Full-Time Student \$10.00

☐ Retiree \$35.00

I'd Like to make a donation to the MPHA Educational Foundation \$_____

Name_____

Agency_____

Position_____

Address_____

City, State Zip_____

Phone_____ Fax_____

Email_____

Areas of Professional Interest

☐ Citizen Health Involvement

☐ Health Promotion

☐ Infectious Disease

☐ Health Official

☐ Environmental Health

☐ Other: _____

☐ Public Health Nursing

☐ Health Care

☐ Support Services

☐ Food and Nutrition

☐ Chronic Diseases

I'd like to serve on the following committees:

☐ Education

☐ Membership

☐ Annual Meeting

☐ Resolutions & Bylaws

☐ Advocacy & Public Policy

☐ Public Health Week

☐ History

PAYMENT OPTIONS

☐ Check enclosed

☐ Master Card/VISA/Discover/American Express

Card #_____ Exp. Date_____

Mail completed form to MPHA, 722 E. Capitol Avenue, Jefferson City, MO 65101.

If you have questions call 573-634-7977.